

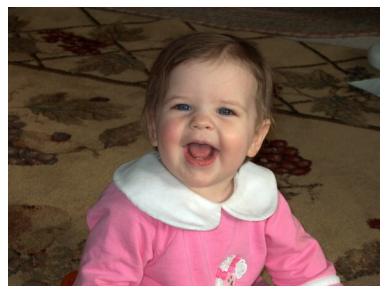
Do your infant and toddler teachers want....

- New ideas on enhancing their infant-toddler rooms?
- Technical assistance on the ITERS-R?
-
- Social-Emotional Development Support
- ITS-SIDS information?
- Current infant-toddler resources?



“Individuals who care for and educate infants and toddlers are on the forefront of providing what children need to thrive and learn.”

-Infant-Toddler Foundations



**Region 11
Infant-Toddler Specialist**

Guilford Child Development, RCCR&R
1200 Arlington Street
Greensboro, NC 27406

Phone: 336-369-5026
Fax: 336-369-5126

Website: www.guilfordchilddev.org
www.rccrr.org

Region 11

**INFANTS &
TODDLERS ARE
OUR
SPECIALITY.....**

Serving: Guilford, Randolph and Rockingham Counties



Infant Toddler Specialists

Infant Toddler Specialists...

are professionals ready to support infant-toddler teachers in licensed child care programs to ensure every child receives quality care in the first three years of life. They are funded through the NC Division of Child Development and are certified in areas such as the Program for Infant Toddler Care (PITC), the Center on the Social and Emotional Foundations for Early Learning (CSEFEL), and ITS-SIDS.



“When infants and toddlers experience caring relationships and positive environments every day, they are on their way to a bright future.”

-Infant-Toddler Foundations

The NC Infant-Toddler Enhancement Project

offers two programs with on-site support in your infant and toddler classrooms.

- *Through IT-QRIP (IT quality rating improvement) you will create action plans based on ITERS assessments and implement the plans with an infant toddler specialist as your guide.*
- *Through SETA (social emotional technical assistance) you will create action plans based on an IT-Inventory of Practices assessment and implement new practices with an infant toddler specialist as your coach.*



Services Include...

- **On-site Technical Assistance**
- **Phone and e-mail Technical Assistance**
- **Training**
- **On-going Support for Infant-Toddler staff**
- **Assistance with ITERS-R**
- **Improvement Plans**
- **Resource Ideas**

Region 11
Infant-Toddler Specialist

Jennifer Anderson
Jennifer.anderson@guilfordchilddev.org
Phone: 336-369-5026